



**DR-M06TH** 6M FM Transceiver Covers 50-54MHz  
 • FM, selectable 20/1W output • 100 memories plus CALL channel • 50 tone CTCSS encoder • Programmable repeater offset for each memory channel • Time-out-timer • 13.8V DC @ 3A • 5.5" w x 1.5" h x 4.5" d, 1.6 lbs • Includes DTMF hand mic

**Available Accessories:**

HK130 Hardware kit, MB130 Mounting bracket, PC15B DC cable



**DUAL BAND MOBILES**

**DR-605TQ** FM Dualbander 144-147.995MHz, 430-449.995MHz tx; 136-173.995MHz, 420-470 MHz rx • 50/10/5W (VHF), 35/10/5W (UHF) • 50 memories, 1 call per band • Cross band repeat, full duplex • Dual VHF/UHF only displays • Multi scan functions • CTCSS encode, 3 European tone bursts • Twin volume controls • Packet compatible • Cable cloning • Internal antenna duplexer • 13.8V DC @ 11.5A • 5.58" w x 1.57" h x 6.8" d, 2.4lbs

**Available Accessories:**

EDS8 EMS14-DR605 adapter, EMS14 Desk top mic, HK130 Hardware kit, MB130 Mounting bracket, PC15B DC cable



**DR-620T** Twin Band Mobile Operates on 2M and 70cm. 144-147.995, 430-449.995MHz transmit, and 108-173.995, 335-480, 87.5-108MHz receive. AM Aircraft band reception and MARS modifiable. VHF/UHF operation includes V/U, V/V and U/U (Not capable of full-duplex V/U,V/V,U/U operation). • 200 memories • 50/10/5W VHF, 35/10/5W UHF • Built-in duplexer • Large, alphanumeric, selectable color display • Removable control head can be remote mounted or allow transceiver to be inverted • Optional 1200/9600 bps packet • Direct GPS input for APRS mobile tracking (optional) • Digital voice (optional) • Illuminated DTMF mic allows direct VFO frequency entry and remote control • CTCSS/DCS encode/decode (4 tone bursts) • Programmable VFO and memory scan including timed, busy and skip modes • Time-out timer • Busy-channel lock out • Temperature-compensated crystal oscillator • Ignition key power on/off feature • Power supply voltage display • Theft alarm • 5.5" w x 1.6" h x 7.3" d, 2.2 lbs..... **\$339.99**

**Available Accessories:**

EDCS9 Separation kit, EJ47U Digital board, EJ50U TNC unit, ERW4 PC cable, HK130 Hardware kit, MB130 Mounting bracket, PC15B DC cable, SW620 Windows programming software



**SINGLE BAND MOBILE**

**IC-2100H-25N** Rugged 2M Transceiver Icom's best performer against IMD. Straight-forward operation • 50/10/5W • 144-148MHz transmit • 136-174 MHz receive • One-touch button operation • 113 memories • Dual, alphanumeric, selectable green/amber backlit display • Backlit TTP mic with 2 programmable keys • One-piece, diecast aluminum chassis • Adjustable attenuator • CTCSS tone enc/decode (50 tones) • Tone scan • Auto repeater with busy lockout • Priority watch • Cloning capability • Mounting bracket • Built to military spec for shock and vibration • Requires 13.8V DC @ 12A • 5.5" w x 1.6" h x 7.1" d, 2 lbs., 10 oz

**Available Accessories:**

BC96 Microphone holder, CSW2100 Windows software and cable, CS2100 DOS cloning software, EX1759 Infrared receiver, HM133S Extra touch-tone mic, HM90A Wireless microphone, MB17A Quick release bracket, MB28H Mobile bracket, OPC346 9.8' DC cable, OPC347 23' DC power cable, OPC440 16.4' mic extension cable, OPC441 Speaker extension cable, OPC474 Radio-to-radio cloning cable, OPC478 PC cable, OPC589 8-pin mic jack adapter cable, OPC647 8.2' microphone extension cable, SP10 Slim-line external spkr



**IC-2200H** 2M FM Transceiver Offers new digital features while retaining the user interface from the popular IC-2100H. The large tuning dial provides easy access without even looking at the front panel. Secondary functions are easily recalled by holding the appropriate button. • 144-148MHz transmit, 118-174MHz receive (includes AM aircraft band and weather channel with alert) • 65/25/10W selectable • FM-Narrow mode, switchable • 207 memories (including 6 scan edges and 1 call channel) • Dynamic Memory Scan (DMS) • 50 CTCSS and 104x2 DTCS encode/decode plus tone scan functions and "pocket beep" • 24 DTMF autodial memories • Selectable green and amber display • Includes remote control microphone, DC power cable, mobile mounting bracket and microphone hanger • 5.5" w x 1.56" h x 5.25" d, 2.75 lbs



**IC-V8000** 2M FM Transceiver 75W output power – a first! • TX 144-148, RX 136-174MHz • 207 alphanumeric memory channels including 1 call channel, 6 scan edges • Weather alert and weather channel scan • DMS scan system • Each memory channel stores a 6 character name, tone frequency, skip info, and more • Priority watch • CTCSS/DTCS • Dynamic Memory Scan, customize/manage memory banks • DTMF encode and pager function capability • 10 DTMF memory channels with up to 24 digit DTMF codes • Versatile cloning from transceiver to transceiver or PC to transceiver • Front mounted speaker • One-piece, die-cast, rugged, aluminum chassis • Large cooling fan on the back and large cooling fins • Selectable green or amber display • Includes HM-133V remote control microphone • 5.9" w x 2" h x 5.9" d, 2.22 lbs.

**Available Accessories:**

CSV8000 Windows software, OPC1132 9.8' DC cable, OPC347 23' DC cable, OPC440 16.4' mic extension cable, OPC441 Speaker extension cable, OPC474 Radio-to-radio cloning cable, OPC478 PC cable, OPC478U PC USB cable, OPC589 8-pin mic jack adapter cable, OPC647 8.2' mic extension cable, SP10 Slim-line external speaker, UT108 DTMF decoder unit, V8000MMB Mobile bracket



**DUAL BAND MOBILES**

**IC-2720H** 2M/70cm FM Transceiver Provides VHF/VHF, UHF/UHF simultaneous receive capability along with VHF/UHF full duplex. • Wide/narrow channel spacing • 144-148, 430-450MHz tx • Extra wideband (cell blocked) receive 118-550MHz (left), 118-174, 375-550, 810-999MHz (right) • Weather, WX alert, and Air bands • 212 memories (10 banks), 2 call, 10 scan edges • Auto repeater function • 50/35W (2M/70cm) • Full function, backlit remote control mic with "hot keys" • Wide viewing angle • Independent controls for each band • 12 DTMF memories • User-selectable amber/green display • CTCSS/DTCS enc/decode, tone scan and pocket beep • Dynamic memory scan • Control head and main unit mic jacks • 1200/9600 bps 6-pin terminal • PC programmable (optional software and cable) • 11.5' separation cable included • 13.8V DC @ 12A • 5.5" w x 2" h x 1.1" d, 5.29 oz. (head), 5.5" w x 1.6" h x 7.4" d, 3.08 lbs. (main)

**Available Accessories:**

CS2720 Windows/DOS cloning software, MB17A Quick release bracket, MB65 Mounting base platform, MB84 Remote controller bracket, MB85 Combination bracket, OPC1132 9.8' DC cable, OPC1156 11.5' separation cable, OPC347 23' DC power cable, OPC440 16.4' mic extension cable, OPC441 Speaker extension cable, OPC474 Radio-to-radio cloning software, OPC478 PC RS232C cable, OPC478U PC USB cable, OPC589 8-pin mic jack adapter cable, OPC647 8.2' mic extension cable, SP10 Slim-line external speaker

**Used & Demo**  
 Equipment lists

Updated regularly on the web.  
 Check them out and order **On-line**



**IC-208H 2M/440 Dualband Mobile** More power, wider receive, lots of memory! Powerful 55/50W (2M/440) output • 118-173, 230-549, 810-999MHz (cell blocked) wide band receive • Weather channel and alert • 500 6-character alphanumeric memory channels • Improved Dynamic Memory Scan (10 banks, 2-100 channels per bank) • New bank listing allows selection of banks you want to scan • Built-in CTCSS/DTCS tone squelch • Operate with control head attached or remote mounted with included cable • Pocket beep and tone scan • 16 DTMF memories • 9600bps data connector • Auto repeater function • Multicolor display lighting and backlight buttons • Remote control microphone included • 5.56" w x 1.56" h x 7.31" d, 2.65 lbs

**Available Accessories:**

CS208 Windows cloning software, MB17A Quick release bracket, MB58 Remote controller bracket, MB65 Mounting base platform, OPC1132 9.8' DC cable, OPC347 23' DC power cable, OPC440 16.4' mic extension cable, OPC441 Speaker extension cable, OPC474 Radio-to-radio cloning cable, OPC478 PC RS232C cable, OPC478U PC USB cable, OPC589 8-pin mic jack adapter cable, OPC601R 23' separation kit, OPC647 8.2' mic extension cable, SP10 Slim-line external speaker

**FREE ITEMS included with some radios.**  
**See Price Guide for details.**



**SINGLE BAND FM MOBILE TRANSCEIVERS**

**TM-271A 2M FM Transceiver** Delivers powerful mobile performance with 60W output and other great features such as multiple scan functions and memory names. MIL-STD compliant, high quality audio, illuminated keys and a large LCD with adjustable green backlighting • 200 memories • FM wide/narrow • N.O.A.A. weather band reception with warning alert tone • CTCSS, DCS and 1750Hz tone burst • Auto repeater offset • FREE Memory Control software available online.

**Available Accessories:**

MJ88 Modular/8-pin adapter, PG2N DC cable, PG5D PC interface cable, SP50B External mobile speaker



**TM-461A 440MHz** Fully loaded with features and built to MIL-STD specifications. Supremely user-friendly. • 438-450MHz transmit; 400-470MHz receive • 35/10/5W • High RF output • 61 multi-function memories plus 1 call channel • Memory Name (MN) function with 6-digit alphanumeric display • DTSS selective calling • Multi-scan capability • Dual menu system • Multi-function microphone with backlight keys • DTMF memory function • Built-in CTCSS tone encoder (optional decoder) • Tone scan • Wireless cloning function • Repeater reverse switch • Lock function • Busy channel lock out • Auto power-off • Time-out timer • 13.8V DC @ <11A • 5.5" w x 1.5" h x 6.3" d, 2.2 lbs

**Available Accessories:**

MB201 Mobile brkct, MJ88 Modular/8-pin adapter, PG2N DC cable, SP50B External mobile spkr, TSU8 CTCSS decoder



**TM-541A 1200MHz FM Mobile Transceiver** Extremely compact and lightweight, perfect for mobile installation. Enhanced night-time operation with its illuminated keys, large LCD, and backlight microphone with DTMF. Covers 1240-1300MHz transmit and receive • 10W RF power output • Easy-to-read, easy to operate illuminated keys plus large LCD display • 20 multi-function memory channels plus call channel • Built-in CTCSS tone encoder • ALT (Automatic Lock Tuning) • Tone alert system with elapsed time indicator • DTSS (Dual Tone Squelch System) • Pager function • Auto-power off • Time-out timer • Multi-scan function • Programmable call • Programmable VFO • Offset and repeater reverse switches • Multi-function backlight DTMF microphone supplied • 13.8V DC @ <6A • 5.5" w x 1.5" h x 6.3" d, 2.4 lbs.

**Available Accessories:**

KQ18 CTCSS decoder, MB201 Mobile bracket, PG2N DC cable, SP50B External mobile speaker



**DUAL BAND UHF/VHF MOBILES**

High performance mobiles that receive three bands simultaneously (with optional band unit) with triple display. Available detachable front panel and wireless remote control functions (external DTMF signal) add versatility. • Selectable frequency step • Built-in DTSS selective calling with page • 101 memories/memory bank system • Flexible scan and scan stop modes • Tone alert with elapsed time indicator • Triple repeater functions • S-meter squelch • Separate antenna and speaker terminals, squelch and volume control per band • Automatic band change • Sub-band muting • Date/time display, stopwatch, alarm • On/Off and time-out timers • 13.8V DC @ <11A • 5.9" w x 1.5" h x 6.8" d, 3.3 lbs.

**TM-642AD 2M/220MHz** (pictured) 144-148MHz transmit/118-174MHz receive and 222-225MHz transmit/215-235MHz receive • 50/10W (2m); 25/10W (220MHz)

**TM-742AD 2M/440MHz** 144-148MHz tx/118-174MHz rx and 438-450MHz tx/410-438MHz rx • 50/10W (2m); 35/10W (440MHz) • Looks like TM-642AD except frequency display

**Available Accessories:**

DFK3 9' separation display cable kit, DFK4 13' remote cable kit, DFK7 Deluxe 22' remote kit, MJ88 Modular/8-pin adapter, PG2N DC cable, SP50B External mobile spkr, TSU7 CTCSS decoder unit, UT1200 10W 1.2GHz unit, UT2205 25W 220MHz unit (for TM-742AD only), UT4405 35W 440MHz unit (for TM-642AD only), UT505 50W 6M unit



**TM-G707A 144/440MHz FM Dual Band** Extra-ordinarily user-friendly with extra-large detachable control panel. 144-148, 430-450MHz transmit; 118-174, 410-524MHz receive • 50/10/5W (VHF); 35/10/5W (UHF) • Detachable control panel with high-visibility amber LCD display • 180 multi-function alphanumeric memories • Multi-scan functions • Priority scan function • Built-in CCTSS encoder and decoder • 1200/9600bps packet ready • Cross band repeater access • Selectable frequency step • S-meter squelch • Time-out timer • Dimmer control • Auto power-off • Multi-function backlight microphone with DTMF • 13.8VDC @ 11A • 5.5" w x 1.5" h x 7.4" d, 2.7 lbs

**Available Accessories:**

DFK3C 9' cable kit, DFK4C 13' cable kit, DFK7C Deluxe 23' remote kit, MB201 Mobile bracket, MJ88 Modular/8-pin adapter, PG2N DC cable, PG45 PC interface cable, PG5A Packet data cable, SP50B External mobile speaker, VS3 Voice synthesizer

**Look For This**

**NEW**

**& Check Out AES' Latest Additions.**

# KENWOOD



**TM-D700A 144/440MHz Dual Band Data Communicator** Fully equipped to complement SSTV, GPS and APRS®. 144-148, 430-450MHz transmit • 118-148, 136-175, 300-524, 800-1300MHz wide band receive (cell blocked) • 50/10/5W (VHF); 35/10/5W (UHF) • Detached control panel with extra-large backlit LCD and multi-function key display • Backlit microphone with alphanumeric input • Easy-to-use menu system • Advanced APRS-99 features • Built-in 1200/ 9600 bps TNC (AX.25) • DX cluster monitoring • Dual receive on same band for voice and data • 200 alphanumeric memories • 2 call channels • 10 programmable memory scan banks • Built-in CTCSS and 1750 tone burst • Digital Code Squelch (DCS) • DTMF memory • Cross band and fixed band repeater operation • DCS code scan, tone, CTCSS scan • 10-channel program scan • Visual band scope • 13.8VDC @ 11.5A • 5.5" w x 2.4" h x 1.2" d, 0.4 lbs. (control), 5.5" w x 1.2" h x 7" d, 2.6 lbs. (main)

**Available Accessories:**

MB201 Mobile bracket, MJ88 Modular/8-pin adapter, PG2N DC cable, PG4X 13' extension cable kit, PG5A Packet data cable, SP50B External mobile spkr, VS3 Voice synthesizer



**TM-V7A 144/440MHz FM Dual Bander** Easy-to-operate control panel with dual-mode, cool-blue, reversible LCD, offering positive and negative displays. Use with a PC, GPS, packet TNC or operate APRS position reporting and message system locally or nationally. Transmit: 144-148, 430-450MHz; receive: 118-174, 410-470MHz • 50/10/5W (VHF); 35/10/5W (UHF) • Data connector and separate automatic digital channel for APRS® • Detachable control panel • Dual receive on same band • Up to 280 multi-function memory channels (180 with 7-character alphanumerics) • Multi-scan functions • DTSS selective calling with page function • Built-in CTCSS enc/decoder • 1200/9600bps packet ready • Friendly operating menu • Automatic band change • Selectable frequency steps • S-meter squelch • Time-out timer • Audible frequency ID • Auto repeater offset (144MHz) • Auto power-off • Backlit multi-function mic with DTMF • 13.8VDC @ 10A • 5.5" w x 1.5" h x 7.4" d, 2.7 lbs

**Available Accessories:**

DFK3C 9' cable kit, DFK4C 13' cable kit, DFK7C Deluxe 23' remote kit, MB201 Mobile bracket, MJ88 Modular/8-pin adapter, PG2N DC cable, PG4S PC interface cable, PG5A Packet cable, SP50B Ext. mobile spkr, VS3 Voice synthesizer

# MFJ MFJ ENTERPRISES, INC.



## LOW POWER SINGLE BAND SSB MOBILES

No microprocessor – turn on and tune in. • 20W PEP (less on VHF models) – plus Constant Current™ syllabic speech processing for an added 4–6dB advantage • Includes handheld dynamic microphone • 3A from 12V supply or battery • Low noise preamp and active double balanced mixer front end • Sharp 2.3kHz SSB crystal ladder filter reduces pass-band noise and fights QRM • TVI protection • Real S-meter • Agile tuning – reduction drive analog VFO – scan band quickly, zero in smoothly • Amp jack • 2.5" h x 6.5" w x 6" d, 2 lbs.

**9402X 2M SSB Adventure Radio™, 7W**

**9406X 6M SSB Adventure Radio™, 10W**

**9410X 10M 20W Adventure Radio™**

**Available Accessories:**

1770A 10M dipole for 9410X, 4110 Portable AC power supply, 4114 Rechargeable power pack, 416 CW adapter, 971 200W HF tuner (9410X only)



## VHF DATA RADIOS

Don't tie up your expensive rig on a single packet channel, check out these low-cost MFJ Data Radios.

**8621 PacketOnly™ 2m Transceiver** Compatible with all TNCs with hardware DCDs and most TNCs with software DCDs • 1200/9600 baud • 5W output • Low current drain (15mA on receive and less than 1 amp on transmit) • 5" w x 5" d x 1.5" h • Crystals installed for 145.01MHz

**8621X2 PacketOnly™ 2m Transceiver** Ready for APRS use. • Crystalled and aligned for 144.390MHz • 5W output

**Available Accessories:**

4110 Portable AC power supply, 5100 Data radio cable (MFJ/TAPR), 5100YH Data radio cable (KPC9612), 5100YV Data radio cable (KAM/KPC3), 5106 Open end (6-pin mini Kenwood/Yaesu)

# RANGER Communications, Inc.



## SINGLE BAND 6M MOBILE

**RCI-5054DX All-Mode 6M Transceiver** Covers 50-54MHz • 10W CW/AM/FM, 25W PEP SSB • 10 programmable memory frequencies • Programmable repeater offset (splits of up to 2MHz) • ± 2.5kHz receiver clarifier • Noise blanker/ANL circuitry • Programmable receiver scanning for quick search of active frequencies • Includes Up/Down tuning hand microphone • 12V DC • Public address feature • 2.4" h x 7.75" w x 10.75" d



## DUAL BAND MOBILES

**RCI-2950DX 10/12M Transceiver** An old favorite updated with 12M, improved receiver, double FET balanced mixer, surface mount components and improved display lighting. Covers 24.8-24.99, 28-29.7MHz • 25W (SSB), 12W (CW), 10W (AM/FM) • Dual VFO • RIT • Noise blanker • Standard repeater offsets • Programmable tone • Scanning • 10 programmable frequencies • Lockout

**RCI-2970DX** Higher power version. 150W (SSB PEP), 50W (CW/FM/AM)

**FREE ITEMS** included with some radios. See Price Guide for details.

DATE \_\_\_\_\_

THIS CERTIFICATE IS VALID FOR \_\_\_\_\_

TO BE EXCHANGED FOR CASH AT \_\_\_\_\_

PREPARED BY \_\_\_\_\_

Certificate expires one year from date of purchase. Subject to availability. Not to be replaced if lost or stolen.

5710 N. Reed Page Rd.  
Milwaukee, WI 53223  
414-358-0333  
1-800-558-6811

10000 E. 15th Ave.  
Denver, CO 80231  
448-585-7388  
1-800-321-3284

4211 Commonwealth Ave.  
Orlando, FL 32803  
407-894-3238  
1-800-527-1917

4440 South Polaris Ave.  
Las Vegas, NV 89133  
702-447-3134  
1-800-424-4727

**GIFT CERTIFICATE**

# AES

AMATEUR ELECTRONIC SUPPLY

# Metallic Silver

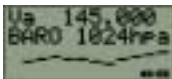
The VX-5R, the world's most popular Triple-Band Hand-Held FM Transceiver, is now available in a beautifully-crafted Silver version: the VX-5RS! With the legendary VX-5R performance flexibility, the stylish VX-5RS is the shining star for Amateur VHF/UHF operation!

50/144/430 MHz TRIPLE-BAND  
HEAVY DUTY FM TRANSCEIVER  
**VX-5RS**  
(Silver version)

50/144/430 MHz TRIPLE-BAND  
HEAVY DUTY FM TRANSCEIVER  
**VX-5R**  
(Black version)

## Features

- Ultra Compact: 2.4" x 4.1" x 1.3"
- Aluminum Diecast Case
- MIL-STD 810 Rating
- Optional Barometric Sensor Unit
- 5 W Power Output (430 MHz: 4.5 W)
- AM/Shortwave Receive
- AM Aircraft Receive
- Long Life Lithium-Ion Battery: 7.4 V @ 1300 mAh
- CTCSS and DCS Built In
- Dot Matrix LCD
- Dual Watch
- Spectra-Scope™ Graphical Display
- 220 Memories plus "Home" Channels
- Ten Pairs of "Band Limit" Memories
- Ten Auto-Scan Weather Channels (North American version)
- 8-Digit Alphanumeric Memory Tags
- Convenient Icon Display Mode
- Smart Search™ Automatic Memory Loading
- Automatic Repeater Shift
- Auto-Range Transponder System (ARTS™)
- Multiple Battery Savers
- Time-Out Timer (TOT)
- Busy Channel Lock Out (BCLO)
- Versatile High-Speed Scanning
- 16-Digit 9-Memory DTMF Autodialer
- One-Touch Emergency Channel
- ADMS Windows™ PC Programmable
- Innovative Multi-Section Antenna
- Full Line of Accessories



**YAESU**  
Choice of the World's top DX'ers™

Vertex Standard  
US Headquarters  
10900 Walker Street  
Cypress, CA 90630 (714)827-7600

For the latest Yaesu news, visit us on the Internet:  
<http://www.vxstdusa.com>

Specifications subject to change without notice. Some accessories and/or options may be standard in certain areas. Frequency coverage may differ in some countries. Check with your local Yaesu Dealer for specific details.

# SIXTY METERS AND MORE!

## New Upgrades to Our Most Popular Models



**TCXO 0.5 ppm  
Included**

**ALL MODE  
PORTABLE/BASE TRANSCEIVER**

**FT-897D**

HF/50 MHz 100 W/144 MHz 50 W/430 MHz 20 W  
20 W (Optional FNB-78 Battery Required)

**60 m Band**

**TCXO DSP**



**DSP**

**DIGITAL SIGNAL PROCESSING  
Included**

**ULTRA COMPACT  
ALL MODE MOBILE TRANSCEIVER**

**FT-857D**

HF/50 MHz 100 W/144 MHz 50 W/430 MHz 20 W

**60 m Band**

**DSP**



**FNB-85 1400 mAh  
Long-Life Ni-MH Battery  
and NC-72B Charger  
Included**

**ULTRA COMPACT  
ALL MODE PORTABLE TRANSCEIVER**

**FT-817ND**

HF/50/144/430 MHz 5 W

**60 m Band**

### ATAS-25 Manually-Tuned Portable Antenna

The ATAS-25 is a manually-adjusted portable antenna ideal for field use with the FT-817. Designed for mounting on a standard camera tripod (1/4" stud), the ATAS-25 is tuned by sliding the shorting ring of the loading coil up or down and selecting the appropriate number of top sections. Counterpoise wires are supplied.

The ATAS-25 is constructed of high-grade materials for maximum efficiency, and it's the perfect traveling companion for your FT-817!

Freq. Range: Amateur Bands 7-450 MHz,  
Max. Power: HF/50 MHz: 100 W SSB/CW  
(50% Duty, 1 min. TX/RX)

AM/FM: 50 W  
144/430 MHz: 50 W  
Size: Max. Length 7'3" (2.2 m)  
Min. Length for Carrying: 2' (0.6 m)  
Weight: 2.1 lb. (930 g)

**ATAS MICRO**

**YAESU**  
Choice of the World's top DX'ers<sup>SM</sup>

Vertex Standard  
US Headquarters  
10900 Walker Street  
Cypress, CA 90630 (714)827-7600

For the latest Yaesu news, visit us on the Internet:  
<http://www.vxstdusa.com>

Specifications subject to change without notice. Some accessories and/or options may be standard in certain areas. Frequency coverage may differ in some countries. Check with your local Yaesu Dealer for specific details.

# Get "Back to Basics" with YAESU's New FM Dual Band Mobile One-Touch Operation / Wide Receiver Coverage Included

**High Power Output**  
(50 W VHF/40 W UHF)

**Wide Receiver Coverage**  
Including AM Aircraft Reception,  
NOAA Weather Alert Broadcasting\* \*USA Version

**Five One-Touch "Hyper Memory"**  
Transceiver Configuration Keys

**Over 1000 Memory Channels**  
with Alpha-Numeric Labels,  
Twenty Memory Groups

**WiRES™ Internet Linking**  
Compatibility

**144/430 MHz**  
**DUAL BAND**



**ACTUAL SIZE**  
\*Simulated LCD display

## YAESU FM Mobile Series

**QUAD BAND  
DUAL RECEIVE**

**FT-8900R**  
29/50/144/430 MHz FM QUAD BAND TRANSCEIVER

**DUAL BAND  
DUAL RECEIVE**

**FT-8800R**  
144/430 MHz FM DUAL BAND TRANSCEIVER

**DUAL BAND**

**FT-7800R**  
144/430 MHz DUAL BAND  
FM TRANSCEIVER

**YAESU**  
*Choice of the World's top DX'ers™*

Vertex Standard  
US Headquarters  
10900 Walker Street  
Cypress, CA 90630 (714)827-7600

For the latest Yaesu news, visit us on the Internet:  
<http://www.vxstdusa.com>

Specifications subject to change without notice. Some accessories and/or options may be standard in certain areas. Frequency coverage may differ in some countries. Check with your local Yaesu Dealer for specific details.

# NO COOLING FAN COOL AND QUIET 65 W OPERATION

Yaesu's FT-2800M, the most ruggedly-built 2-meter amateur transceiver ever, provides 65 Watts of power along with YAESU's renowned bullet-proof receiver front end. Direct keypad frequency entry, Alpha-Numeric Memory System, the high power output, and unsurpassed ergonomics make the FT-2800M an operator's dream come true!



## New Ultra-High-Dissipation Heat Sink Design



The all-new heat sink of the FT-2800M provides more effective cooling than any other design, allowing long transmission periods without dangerous heat build-up or power reduction due to thermal protection.

High power output, a huge, easy-to-read display, and one-touch WIRES™ Internet Linking Access capability are yours with the exciting new FT-2800M.

On transmit, the 65 Watts of true FM power output provides you with excellent coverage and superb voice clarity. On receive, you get extended coverage of 134-174 MHz, with a special memory bank dedicated to the NOAA Weather Broadcast Channels (U.S. version only).

Built to the exacting requirements of both the commercial radio industry, as well as the U.S. military's MIL-STD 810, the FT-2800M is constructed using an aluminum diecast chassis/heatsink assembly, providing outstanding mechanical and thermal stability for the internal components.

With superb ergonomics to go along with its stout RF design, the FT-2800M is ready for action, at home or away!

HEAVY-DUTY VHF FM TRANSCEIVER  
**FT-2800M**



ACTUAL SIZE

**YAESU**  
Choice of the World's top DXers™

Vertex Standard  
US Headquarters  
10900 Walker Street  
Cypress, CA 90630 (714)827-7600

For the latest Yaesu news, visit us on the Internet:  
<http://www.vxstdusa.com>

Specifications subject to change without notice. Some accessories and/or options may be standard in certain areas. Frequency coverage may differ in some countries. Check with your local Yaesu Dealer for specific details. Specifications guaranteed only in 2-meter Amateur band.

